



2023-24

GRATITUDE REPORT



EVERETT PUBLIC SCHOOLS
FOUNDATION

Page left intentionally blank

A MESSAGE FROM THE BOARD PRESIDENT



Dear friends,

Grateful is the first word that comes to mind when I think of our Foundation supporters. It is your generosity that enables us to advocate for our students and community! So whether you are a donor, a volunteer or a business partner, thank you for supporting Everett Public Schools Foundation!

This past year, the Foundation has continued its mission to ensure that all students in Everett Public Schools have the programs and resources they need for success and well-being. As you review this annual report, you will see many examples of our programs and gain an understanding of how the resources we provide through our many programs address this mission.

I hope you will feel the passion and energy that everyone has put into making a difference in our community. Thank you for being a big part of ensuring the success of our students, staff and community through your decision to support Everett Public Schools Foundation. We look forward to making strides in the year ahead with your support!

With Gratitude,
Heather Morrow
EPSF President, 2024-25

FOUNDATION EARNS TOP CHARITY RATINGS, HIGHLIGHTING TRUST AND TRANSPARENCY



The Everett Public Schools Foundation (EPSF) has been verified and supported by these top four charity watch organizations, receiving their highest ratings. Most notably, EPSF achieved a Platinum Transparency rating from Charity Navigator, the largest independent charity evaluator in the United States. This rating reflects our strong financial health and commitment to accountability and transparency. Our Platinum rating, the highest available, distinguishes us from our peers and demonstrates our trustworthiness to the public. Only 25% of charities rated by Charity Navigator earn this recognition. With this rating, you can be confident that your donations are going to a financially responsible and ethical organization when you choose to support the Foundation. We are proud to be recognized for our work both locally and nationally.

DONATE TODAY!

Your donation to EPSF helps provide essential programs, resources, and support for educators that are not covered by local, state, or federal funding, benefiting over 20,000 students in Everett Public Schools.



A MESSAGE FROM THE SUPERINTENDENT



"Every year, I am amazed and grateful for our partnership with the Everett Public Schools Foundation. Every person who contributes to the Foundation is engaging our youngest learners to ensure a great start to their school careers by continuing to invest in early learning, all the way up to providing career and college scholarships. In between, you support the Family Resource Center, unsheltered youth, and social workers through the immediate needs fund. You provide DEI grants and over 60 classroom grants, which inspire innovation in our amazing teachers. The impact goes beyond the things listed here thanks to your generous contributions. Everett Public Schools Foundation is our key partner in ensuring your generosity touches every student and school across our district. Thank you to every family, community member, and local business for your partnership in supporting our kids and schools!"

Dr. Ian B. Saltzman

MISSION & VISION STATEMENT

The Everett Public Schools Foundation's mission is to support all students to have the programs and resources they need for success and well-being. Our vision is that students in Everett Public Schools will lead and shape the future.

OUR WORK

The Everett Public Schools Foundation has been a vital partner in the district and community since 1985. We play a vital role by helping fill the gap in funding for innovative and essential programs that support student success and well-being not covered by State or Federal funding.

The Foundation is committed to continuing our journey to evolve, improve, and enhance our work with students, the district, and our community, increasing our lens of diversity, equity, and inclusion. The journey has guided us to challenge the scope of our work and continue creating access, support, and awareness through the programs we support.

CORE VALUES



STRATEGIC PILLARS



IMPACTING STUDENT, FAMILY, & STAFF OUTCOMES

Creating a supportive culture where each student is engaged, thrives, and values learning by:

- Increasing literacy, math, and science achievement
- Supporting equitable access to resources that support student learning
- Inspiring teachers to seek innovative programs to foster achievement and excitement for learning

PROGRAMS & AREAS OF SUPPORT

- Classroom grants
- New teacher grants
- Paraeducator grants
- Library grants and literacy support
- ★ **Special services program support**
- STEM/Innovation support
- Support for the arts
- ★ **Homework support**
- ★ **Parent education**
- New staff engagement
- Donor-funded special projects
- Misc. program support

EARLY LEARNING

Engaging our youngest learners to ensure a great start to their school careers by:

- Using play to build literacy and language skills
- Introducing the classroom setting
- Fostering relationships with the students, families, caregivers, and teachers

PROGRAMS & AREAS OF SUPPORT

- Everett Ready
- Play & Learn
- Literacy Support
- Translation and dual language resources

★ Future work

CORE VALUES



INNOVATION

Recognize and actively support innovative education



COMMUNITY ENGAGEMENT

Cultivate collaborative relationships and build and sustain public trust to provide long-term support



EXCELLENCE

Advocate for and support diverse programs to foster exceptional educational outcomes



DIVERSITY, EQUITY, & INCLUSION

Respect the unique needs of all learners through equity and cultural awareness

COLLEGE, CAREER, & LIFE READINESS

Ensuring students are prepared to succeed in career, college, and life by:

- Implementing high school and beyond scholarships
- Supporting graduation and college dual credit tuition
- Expanding opportunities for all students

PROGRAMS & AREAS OF SUPPORT

- High school and beyond scholarships
- Summer school tuition assistance
- College in High School and dual credit tuition assistance
- Career Link support
- ★ **Student Life Readiness grants**
- Student DEI grants
- ★ **Civic engagement support**
- EPSF student board representatives

STUDENT NEEDS & WELL-BEING

Supporting student needs, mental health, and well-being by:

- Providing critical resources and supporting students' essential needs including Kids in Transition
- Partnering with EPS Social Workers and Family Resource Center team
- Expanding opportunities to enhance student wellness

PROGRAMS & AREAS OF SUPPORT

- Student needs grants
- Social worker program support
- Family Resource Center partnership and support
- Stuff the Bus program
- ★ **Supporting student mental health and wellness**
- ★ **Supporting Kids in Transition**

STRATEGIC PILLARS

DID YOU KNOW

Because of your support during the 2023-24 school year, the Everett Public Schools Foundation:



Supported our youngest learners to be confident and ready to start their school careers.

\$54,000 FOR EVERETT READY AND PLAY & LEARN PROGRAMS



3,300

STUFFED BACKPACKS

were delivered to the most vulnerable students and families to have the tools they need for the first day of school

With the help of over 200 community volunteers!

\$60,000

IN FUNDING AWARDED

For innovative classroom, new teacher, library, and DEI grants.

115 GRANTS

SUPPORTING

130+

TEACHERS AND STUDENTS

IN **23** SCHOOLS IMPACTING OVER

15,054

STUDENTS



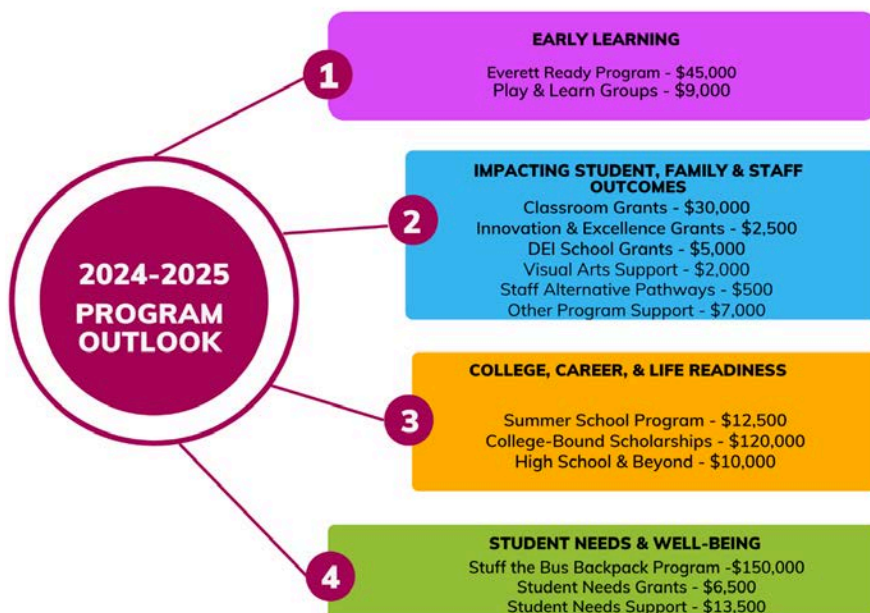
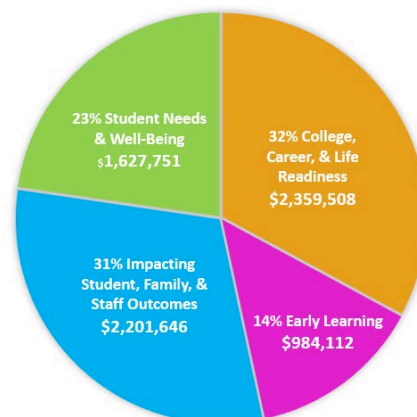
Distributed over **\$119,000** in **COLLEGE AND CAREER-BOUND SCHOLARSHIPS**



In the past 39 years, provided over

\$7 MILLION

in funding support to Everett Public Schools students, staff, and families filling the gap for critical student and program support.



ALMOST \$2.5 M

FOR HIGH SCHOOL & BEYOND, CAREER READINESS EVENTS, CAREER LINKS, COLLEGE IN THE HIGH SCHOOL, AND 8TH GRADE COLLEGE FIELD TRIPS TO IMPACT THE FUTURE OF OUR STUDENTS SINCE 1985.

LAND ACKNOWLEDGEMENT



We acknowledge the original inhabitants of this area, the Sduhubš* people, and their successors, the Tulalip Tribes. Since time immemorial, they have hunted, fished, gathered on, and taken care of these lands and waters. We respect their sovereignty, their right to self-determination, and honor their sacred spiritual connection with the land and water. In Everett Public Schools, we strive to create equitable outcomes and build a culture of inclusive belonging for all students, teachers, staff, and community.

**(Lushootseed pronunciation of Sduhubš: sdoh-HOHBSh)*

DIVERSITY, EQUITY, & INCLUSION

EPS Foundation recognizes that educational excellence requires a commitment to equity. Everett's students bring a wide range of assets, abilities, backgrounds, and needs to their educational experience. This requires removing barriers that perpetuate inequities which lead to opportunity and achievement gaps. The EPS Foundation is equity-driven, making intentional decisions that combat institutional discrimination and bias (both explicit and implicit), and eliminate disparities in educational outcomes based on socioeconomic status, gender, gender identity, gender expression, race, religion, national origin, ethnicity, sexual orientation, disability, or family background.



Everett Public Schools Foundation Board of Directors 2024-25

Dillion Adams
Everett High School
Student Board Member

Anthony Anderson
Everett Public Schools – Director STEM
Partnerships & Choice Programs

Jennifer Black (Treasurer)
Community Volunteer

Dr. Shelley Boten (Board Liaison)
Everett Public Schools – Chief Academic Officer

Theresa Campbell (Interim)
Silver Lake Elementary – Principal

Gracie Geremia (1st Vice President)
ToGather - Owner

Dr. Jessica Gideon
Madison Elementary – Principal

Jennifer Goodhart
Everett Public Schools - Communications

Jennifer Gregerson
City of Everett

Erik Heinz
Jackson High School – Assistant Principal

Jared Kink
Everett Education Association - President

Claudia McClain
Community Volunteer

Heather Morrow (President)
Community Volunteer

Kristy Mothersbaugh (Immediate Past
President)
Community Volunteer

Karlee Munger (Secretary)
Mountain Pacific Bank

Vivienne Nguyen
Cascade High School
Student Board Member

Michelle Nims
Community Volunteer

Holly Oakley
Learning & Development Consultant
Wells Fargo Bank

Elizabeth Pendzick
Community Volunteer

Kailani Rands (2nd Vice-President)
Everett Public Schools - Facilitator

Dr. Tyler Ream
North Middle School - Principal

Mya Verduzco
HM Jackson High School
Student Board Member

Rich White
State & Local Government Operations
The Boeing Company

Charlotte Zissel
Opportunity Council/Childcare Aware NW
Early Learning Coach and Trainer

Emeritus

Dan Gunderson
Windermere Real Estate

Bob Reese
Community Volunteer

Staff

Kay Fantin
Executive Director

Kathy McKenzie
Operations Manager

Kirsten Hansen
Development Manager

JOIN US!

YOU ARE INVITED TO ATTEND OUR ANNUAL BENEFIT EVENT MOVIE PREMIERE!

RESERVE YOUR SEATS TODAY!

Opening night premiere:
 March 19, 2025
 Doors at 6:30 p.m.
 Everett Civic Auditorium
 2415 Colby Ave., Everett

Matinee:
 March 21, 2025
 Doors at 9:30 a.m.
 Community Resource Center
 3900 Broadway, Everett

ILIANA JONES
 and the
LOST DONATION

RESERVE YOUR SEAT AND DONATE TODAY!

 EVERETT PUBLIC SCHOOLS
FOUNDATION



Superintendent Scholarship Award for Excellence – May 2025

Visual Arts Event – May 2025

Stuff the Bus for Kids Collection – August 15-19, 2025

All in for Kids Giving Campaign – October 2025

Classroom Grant Awards – November 2025

DEI Student Grants – November 2025



If you want to learn more, visit our website, www.epsfoundation.org
 Stay connected with us! Facebook @epsFoundation1 • Twitter @EPSF_WA • Instagram #EPSFoundation

EVERETT PUBLIC SCHOOLS

OUR DISTRICT

Source: Office of the Superintendent of Public Instruction 2023-24

20,437 STUDENT ENROLLMENT

GRADUATION RATES 

95.2% 2024 FOUR-YEAR
95.8% 2023 FIVE-YEAR

6.2%
STUDENTS EXPERIENCING HOMELESSNESS 

15% 
STUDENTS WITH DISABILITIES RECEIVING SUPPORTS



| | |
|--|-------|
| White | 41.3% |
| Hispanic/Latino of any race(s) | 21.3% |
| Asian | 20.9% |
| Two or more races | 9.4% |
| Black/African American | 4.9% |
| Native Hawaiian/Other Pacific Islander | 1.7% |
| American Indian/Alaska Native | 0.5% |



19.1%
MULTILINGUAL LEARNERS 

16,000
DAILY BUS RIDERS 

44.5%
STUDENTS RECEIVING FREE AND REDUCED-PRICED MEALS 

14,700
MEALS SERVED DAILY 

HOW OUR DISTRICT IS FUNDED

(General Fund)

74% **State Funding**
These funds are dependent on student enrollment & other factors. 

16% **Local Taxes**
These funds are from the voter-approved Educational Programs & Operations Levy, covering what the state does not fund for our district. 

6% **Federally Funded**
These funds can only be spent within specific federal programs such as Special Education. 

4% **Other Sources**
These funds come from sources such as grants, donations, and interest income. 

STUDENTS ON TRACK FOR COLLEGE-LEVEL LEARNING

65.3% ELA

53.9% MATH

61.5% SCIENCE

EVERETT PUBLIC SCHOOLS COMPARED TO WA STATE

| GRADE | ELA | MATH | SCIENCE |
|-------------|---------|---------|---------|
| 3 | + 16.6% | + 14.4% | |
| 4 | + 15.7% | + 15.6% | |
| 5 | + 17.3% | + 17.6% | + 15.8% |
| 6 | + 12.0% | + 10.7% | |
| 7 | + 11.3% | + 11.3% | |
| 8 | + 11.9% | + 11.6% | + 11.4% |
| HIGH SCHOOL | + 3.8% | + 5.8% | + 7.3% |

Table shows how EPS scored in relation to WA State in standardized testing (Fall 2024)

CLASSROOM GRANTS

The Everett Public Schools Foundation recognizes educational excellence requires a commitment to equity. Everett Public Schools' students bring a wide range of assets, abilities, backgrounds, and needs to their educational experience. This requires removing barriers that perpetuate inequities which lead to opportunity and achievement gaps.



PAMELA WEAVER, Gateway Middle School, "Piano Accompanist"

This grant allowed our students to explore new dimensions of expression and realize higher levels of artistic achievement, challenging them to look beyond the notes on a page. This collaboration isn't just about musicality; it's about fostering a creative dialogue they can experiment and then seek feedback from our ensemble members. The impact of this grant on our students has been profound. It's not just about the music we made together but the growth and confidence they gained through working with Kirsten. She became more than an accompanist; she became a mentor and role model, showing our students what dedication and passion for music can achieve.

NICOLE MANUEL JOHNSON, Madison Elementary, "Bowling is up OUR alley!"

The EPS Foundation gave us the chance to take our first field trip in Developmental Kindergarten. It was incredible to see our students engaging in a new activity together, sharing smiles, laughter, and pure joy! This was a very memorable first field trip. Students are still talking about their visit to the bowling alley and when they want to go back. For many of our students, this was their first time riding a school bus, visiting a bowling alley, and bowling. It was a fantastic introduction to our community!



KELLY MARKS and APRIL WEITKAMP, Lowell Elementary "Implementation of Comprehensive Literacy for all"

The grant enabled us to enhance our curriculum with engaging, interactive literature and tools, creating an inclusive, multi-sensory reading experience for all students. This approach fostered a sense of belonging, allowing students to participate fully in library activities alongside their peers. Regular practice with chosen and instructional books improved their book-handling skills, enriching their library visits and encouraging a love for reading and exploration.

ELISABETH HULL, MELINDA ZACKY, MEGHAN KREFT-ZENDER and ARMIEE FARRELL, Whittier Elementary, "Diverse Voice, Vibrant Tales: Enriching Kindergarten Literacy through Multicultural Storybooks"

The grant for multicultural audiobooks has significantly promoted equity and inclusion among kindergarten students by providing diverse stories that reflect various cultures, languages, and experiences. This representation validates students' identities, fosters belonging, and builds empathy and understanding through exposure to different perspectives.

The audio component ensures accessibility for all students, including those facing language barriers or different learning styles, making rich cultural literature enjoyable and inclusive. This approach has enhanced listening, comprehension, and vocabulary skills while increasing engagement and enthusiasm for reading.

Overall, the grant has enriched literacy experiences, fostered cultural appreciation, and positively influenced students' educational journeys.



CLASSROOM GRANTS



EMILY MAGLEY, ANN DINH, and CINDY MONTZINGO, Jefferson Elementary, "4th Grade Mural"

Fourth graders researched Washington State culture, landmarks, natural resources, wildlife, and industry. They chose symbols they thought best represented our state. They then drew designs, transferred them, and painted them. They loved being creative while learning more about Washington State. Students couldn't stop talking about how excited they were to create and paint this mural. This was an amazing collaborative 4th-grade opportunity where all students could contribute. They took pride in this mural and are excited to leave a lasting mark on Jefferson! All students could contribute, and we leveraged student strengths while planning this project. Students who struggled with fine motor skills could contribute to painting the background, students who love to research were able to find ideas, and art-loving students could express their talents through their designs. Every 4th grader had an entry point into this project.

LESLEY MOFFAT, Heatherwood Middle School, "BandBuddies & GrandBuddies"

Our band students showcased their talents during BandBuddies, an after-school enrichment program focused on solos and small group performances. They visited Cogir Assisted Living in Mill Creek to perform for the residents, affectionately called GrandBuddies.

Beyond sharing music, the students and residents formed meaningful connections through a Buddy System, allowing students to ask about life "in the olden days." This initiative not only enhances musical skills but also fosters social growth, goal-setting, teamwork, and community engagement.

Performing for an audience teaches our students valuable lessons in preparation, collaboration, and confidence—all while building lasting relationships with their community.



CHIU-HSIN LIN, H.M. Jackson HS, "Empowering Education through Immersive Experiences"

Students embarked on an immersive field trip exploring Seattle's Chinese cultural heritage through visits to landmarks such as the Chinatown Gate, Hing Hay Park, Uwajimaya, and Honey Court Seafood Restaurant. This experience provided authentic cultural narratives, fostering awareness and sensitivity among students from diverse backgrounds.

The trip also offered real-world opportunities for students to practice language skills through interactions with local shop owners, restaurant staff, and community members, enhancing both linguistic abilities and cultural understanding.

To ensure inclusivity, the trip was fully funded by a grant, covering transportation and admission costs, removing financial barriers and allowing all students, regardless of their socio-economic background, to participate in this enriching experience.



THANK YOU!

Business Partners, Corporations, and Organizations

Annual Business Partners and Foundations

Annual Business Partners ensures that the Foundation can continue to fund critical programs such as innovative Classroom Grants and Student Needs for each of our 27 schools and our 19,000+ students in Everett Public Schools. Their investment in our students inspires others to support each student, each classroom, each day to build a better future for our community.

SUPERINTENDENT'S STAR:
\$20,000+



DISTINGUISHED SCHOLAR:
\$5,000 - \$9,999



HEAD OF THE CLASS:
\$1,500 - \$2,499

AquaSox
Brent Planning Solutions
Coastal Community Bank
Community Transit
Cornerstone General
Contractors, Inc.
D.A. Davidson & Co.
Dykeman
Electronic Business Machines
Everett Association of
Paraeducators

Everett Community College
Hargis Engineers, Inc.
Molina Healthcare of WA
Mountain Pacific Bank
Reid Middleton, Inc.
Rotary Club of Mill Creek
Seattle Children's
Windermere Foundation
WSU- Everett

HONOR ROLL:
\$500 - \$1,499

Abbey Carpet & Floors
Anderson Hunter Law Firm
Bassetti Architects
Botesch, Nash & Hall Architects
Edmonds College
IRG Physical & Hand Therapy
L2D2, Inc.

MicroK12
Pacifica Law Group
Peoples Bank
Puget Sound Kidney Centers
Shockey Planning Group, Inc
USTA Martial Arts- Everett
Wetherholt & Associates, Inc.

VALEDICTORIAN:
\$10,000 - \$19,999



MERIT SCHOLAR:
\$2,500 - \$4,999

Friends of Mill Creek Library

**THANK YOU TO
OUR 41 BUSINESS
PARTNERS
FOR THE \$108,500
IN SUPPORT
LAST YEAR!**

**YOUR IMPACT
MADE A
DIFFERENCE FOR
MANY!**

EMMA YULE DONORS

A TRADITION OF CREATING OPPORTUNITIES AND BUILDING FUTURES

The Emma Yule Society is the heart of our Foundation and was formed to allow those who care about continued learning and academic opportunity a chance to participate in making a difference for local students. Emma Yule was a bright and courageous young woman who served as Everett's first and only teacher in December 1891. In honor of her tradition of excellence, the Everett Public Schools Foundation created the Emma Yule Society. You can provide the educational assistance needed by local youth through the Emma Yule Society. Your investment in the future is a gift that will last a lifetime. Our giving society has three benchmark levels of giving each year to provide this avenue of support:



- The Emma Yule Society: \$500 - \$999
- Emma's Circle: \$1,000 - \$1,499
- Emma's Angels: \$1,500+

EMMA YULE DONORS September 1, 2023 - August 31, 2024

EMMA'S ANGELS \$1,500+

Bob & Margaret Bavasi
Matthew Bennett
Jennifer & Roger Black
Brenda Black
Drs. Gary & Susan Cohn
Linda & John Drake
Larry & Greta Fleckenstein
Dr. Chad Golden
Jared & Jennifer Kink
Claudia & Pat McClain
Heather & John Morrow
Holly & Tom Oakley
David & Julie Peters
The Saltzman Family
Dr. Peter & Cheryl Scott
Kelly Shepherd
Dr. Joyce Stewart
Michele & Walter Waddel
Kim & Richard Woodrum
Cathy Woods

EMMA'S CIRCLE \$1,000 - \$1,499

Anthony Anderson
Brick & Connie Baldwin
Shelley & Shawn Boten
Jim Bueler
Jeff & Deanna Colon
Kay Fantin
Cris Jilk
Jeff Lerch
Scott & Kris Mahlum
Caroline & Jeff Mason
Will & Robin McMahan
Pete & Emma Misner
Traci & Timothy Mitchell

Tara Polk
John Sheffield
Mary & Ray Sievers
Kalle & Pete Spear
Daniel & Katie Stark
Gretchen & Todd Stiger
Crispin Wilhelm & Sundee Morris
Tina Wood

THE EMMA YULE SOCIETY \$500 - \$999

Anne Arnold
Heather & Danen Barnhart
Denise Bowers
Dr. Betty & Zebedee Cobbs
Sue Cooper
Mark Duffy
Wes & June Erdahl
Lynn Evans & Al Richardson
Cindy Foster
Gracie Geremia
Jessica & Wilnic Gideon
Jennifer Goodhart & Ryan
Crowther
Marianne Harvey
Maryke Haynes
Liz & Don Healy
Jen & Joseph Hirman
Dr. Gerard Holzman
James Hopper
David Hutt
Kelly Marks
Dr. Catherine & Scott Matthews
Pete & Mee Yok McGuire
Tavis & Elizabeth Miller
Kristy & Jason Mothersbaugh
Celia & Steve O'Connor-Weaver
Larry O'Donnell
Michelle Olson

Deborah Payne
Joanna Peeler
Paul Pitre
Kailani & Taylor Rands
Bruce Rhodes
Rachel Shafer
Farhad Shroff
April Simon
Monica Steiner
Rachel Thoenen
Sechin Tower
Brian & Debbie Webber
Rich & Brenda White
Lorraine Wong

We strive to provide accurate recognition for every donor and sincerely apologize for any errors or omissions.

THANK YOU!

Everything we do is because of you, our community, our amazing Emma Yule members, business partners, and volunteers. Your generosity, passion, talent, and time help us make a positive impact on our students, their families, and Everett School District staff.

SCHOLARSHIPS AND GRANTS

In 2024, over \$119,000 in Scholarships were awarded to graduating seniors! Scholarships are set up in memory or honor of many individuals and groups by their families, friends, our community, and business partners.

Memorial Scholarships:

Alice Mellema
 Bill Serzhon
 Bill & Lillian Taggart
 Brett Jensen
 Bob Whitehead
 Carol Degan
 Earl & June Dutton
 Edith Bennett
 Erin Galli Marques
 Eugene & Charlene Hoover
 Architecture
 Gia Soriano
 Harry E. Botesch
 Kenneth Clake
 Kevin Mackey
 Mackey Music
 Michael Gilchrest
 Michael Schuerhoff
 Mikel "Mr. G" Gobel
 Ofstie
 Reed Baldwin- "Redfellowship"
 Band/ Robotics
 Reg & Betty Scodeller
 Robert Polk Athletic
 Ruth Nelson "Sequoia" Award
 Dominic Soriano
 Shawn McEwen
 Stanley S. Mitchell
 Bill & Lillian Taggart
 Debbie Wade
 Tracy Webber Clifton
 Willinor

Scholarships:

Beckett Family
 Cascade HS Creative Artist
 Cascade HS Faculty Fund
 Everett HS Class of '55
 EPSF Art
 Galli Family CTE
 Howarth Trust
 It Takes a Village
 Jackson HS AVID
 Kristie Dutton
 Lighthouse Cooperative
 Marsha Cogdill
 Mango Service
 Superintendent's Scholarship
 Award for Excellence
 The Flowers Family
 To Go Boldly & Beyond in STEM

Program Grants:

City of Everett Council
 Costco
 EverTrust
 Fred Meyer
 Foundry10
 Howarth
 Rick Steves Benefit
 The Office of Social Justice
 Tulalip Tribes
 Windermere



Cascade High School's Superintendent Scholarship Award for Excellence, sponsored by Drs. Gary & Sue Cohn, winner, James Larson.



Thank you to the following donors \$100,000+

Durham School Services
 Drs. Gary and Susan Cohn

\$50,000+

Anonymous
 Dave and Marilyn Beck
 Mike and Kristie Dutton
 Dykeman, Inc.
 Howarth Trust
 Dr. Carol Whitehead

\$25,000+

Sue Dedrick
 Jim Hopkins and Carol Andrews in memory of James R. Hopkins and Margaret G. Hopkins
 Estate of Paul Lawrence
 Claudia and Pat McClain
 Bill Rucker Family
 Dr. Ian and Robyn Saltzman
 Sonitrol Pacific
 Windermere Real Estate South Everett

\$10,000+

Tom and Sue Cooper
 Dan and Ash Gunderson
 Bryan and Anne Hendrickson
 In memory of Thomas Howard Johnson
 Cynthia and David Jones
 Sally Lancaster
 Caroline and Jeff Mason
 Scott and Kippy Murphy
 Leslie & Glan Thomas
 Katie & Casey Byers
 Nikki & Kevin Bray

\$5,000+

Bob and Margaret Bavasi
 Dana Riley Black and Benjamin Black
 Bill and Marcella Reed
 Molly Ringo
 Roy and Barbara Yates

\$1,000+

Albrecht Family
 Larry O'Donnell
 Karen Madsen and Bill Shepherd
 Kelly Shepherd

Note: We strive to provide accurate recognition for every donor and apologize for errors or omissions. Matching gifts are included when determining giving levels.

We appreciate those who are supporting the community in which they live and work. Investing in our children is an investment in our community's future.

KAY FANTIN

Executive Director
kfantin@everettsd.org
425-385-4693

KATHY MCKENZIE

Operations Manager
kmckenzie@everettsd.org
425-385-4694

KIRSTEN HANSEN

Development Manager
khansen@everettsd.org
425-385-4695

MAILING ADDRESS

PO Box 3112
Everett, WA 98213

PHYSICAL ADDRESS

Community Resource Center
3900 Broadway
Everett, WA 98201



The Annual Report is published by the Everett Public Schools Foundation (EPSF) as part of our mission to build community support. EPSF is a 501 (c)(3) non-profit organization. Tax ID# 91-1329342